



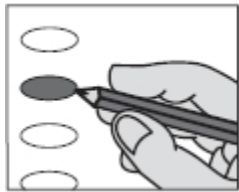
**JAMIE SHEW**  
**DOUGLAS COUNTY CLERK**  
1100 Massachusetts  
Lawrence, KS 66044

**Marni Penrod**-Chief Deputy Clerk  
**Heather Dill**-Deputy Clerk Elections

## Instructions

Enclosed is your official mail ballot and envelope addressed to the County Clerk's Office for the return of your ballot. Mark your ballot in secret, unless you have asked for assistance from someone else. You may request a replacement ballot if you make an error or damage your ballot.

- **Read the instructions carefully and review the ballot before making any marks on it.**



**To vote for a candidate, fill in the oval that corresponds to their name.**

**To vote for a question submitted, fill in the oval at the left of the word "Yes."**

**To vote against a question submitted, fill in the oval at the left of the word "No."**

## After Voting

- Refold your ballot along the original crease lines.
- Place your ballot in the return ballot envelope. **Be sure to sign the back of the return envelope in Section 1, or else your ballot will not be processed.**
- **Mail or deliver your ballot to reach the Election Office by 12:00 noon on Election Day.**
- You can also return your ballot to the Treasurer's Office drop box immediately south of the County Courthouse at the end of the small parking lot. It must be in the drop box by 12:00 noon on Election Day as well.

## Voter Assistance Information

- Any voter who is unable to mark his or her ballot by reason of sickness, physical disability, or illiteracy may request assistance in voting.
- Power of Attorney does not authorize a person to vote for another. Laws provide for assisting the voter only.
- If you have assisted a voter, you must sign the Statement of Person Assisting Voter on the back of the return envelope.